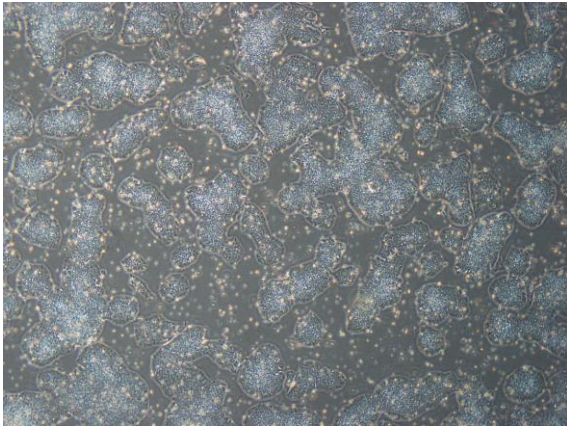
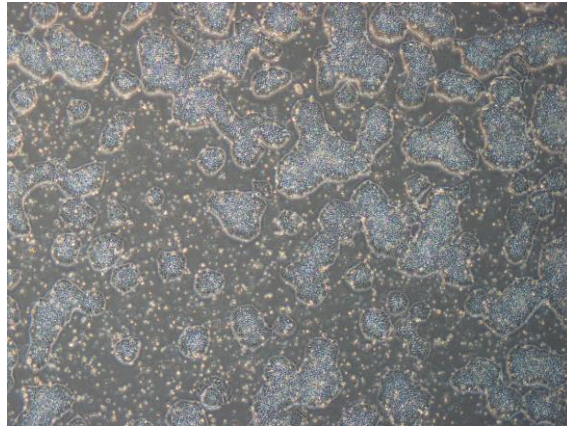


【 CiRA-j-1576 】 Morphology of iPSC colonies

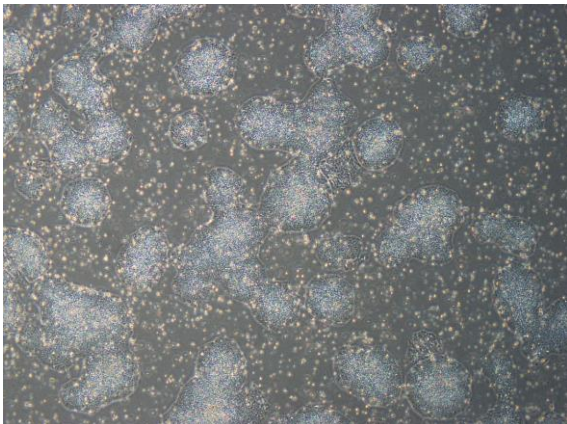
CiRA-j-1576-A: passage-3



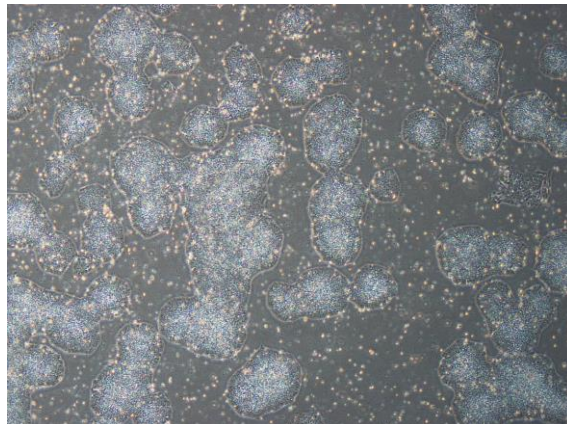
CiRA-j-1576-B: passage-3



CiRA-j-1576-C: passage-3



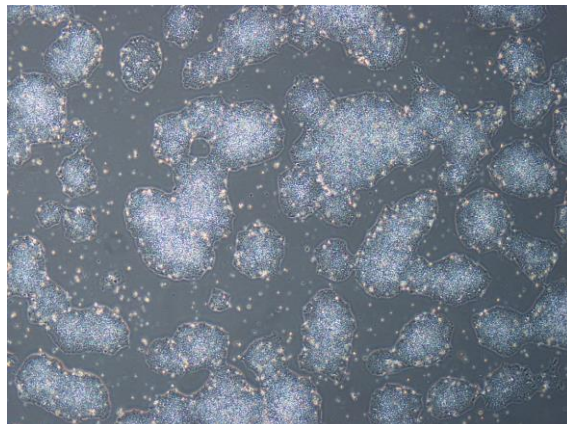
CiRA-j-1576-D: passage-3



CiRA-j-1576-E: passage-3



CiRA-j-1576-F: passage-3



(All images were captured at 4x magnification)